

# INSPECTION REPORT SUMMARY

<b>Company</b>	<b>BLACKSPUR</b>	<b>Size:</b>	<b>88.9 mm</b>
<b>Work Order #</b>	<b>100134</b>	<b>Grade:</b>	<b>J-55</b>
<b>Date:</b>	<b>NOVEMBER 8 2023</b>	<b>Weight:</b>	<b>13.84 kg/m</b>
<b>Well Location:</b>	<b>16-11-51-02 W5M</b>	<b>Nominal Wall:</b>	<b>0.254 in</b>
<b>Ordered By:</b>	<b>WAYNE VANDERGAAG</b>	<b>Rig:</b>	<b>BRANDETTE 8</b>
<b>Inspected By:</b>	<b>Derek Costen</b>	<b>AFE:</b>	
<b>Unit #</b>	<b>T10</b>	<b>PO:</b>	

## TOTAL JOINT SUMMARY

Total Yellow 0% - 15%	56
Total Blue 16% - 30%	61
Total Green 31% - 50%	18
Total Red 51% - 100%	3
<b>TOTAL JOINTS</b>	<b>138</b>

## BREAKDOWN BY CORROSION (PITTING)

Total Yellow 0% - 15%	138
Total Blue 16% - 30%	0
Total Green 31% - 50%	0
Total Red 51% - 100%	0
<b>TOTAL JOINTS</b>	<b>138</b>

## BREAKDOWN BY WALL LOSS (ROD WEAR)

Total Yellow 0% - 15%	56
Total Blue 16% - 30%	61
Total Green 31% - 50%	18
Total Red 51% - 100%	3
<b>TOTAL JOINTS</b>	<b>138</b>

OTHER DAMAGES:

COMMENTS:

Well Location: **16-11-51-02 W5M**

Size 88.9 mm

Grade

J-55

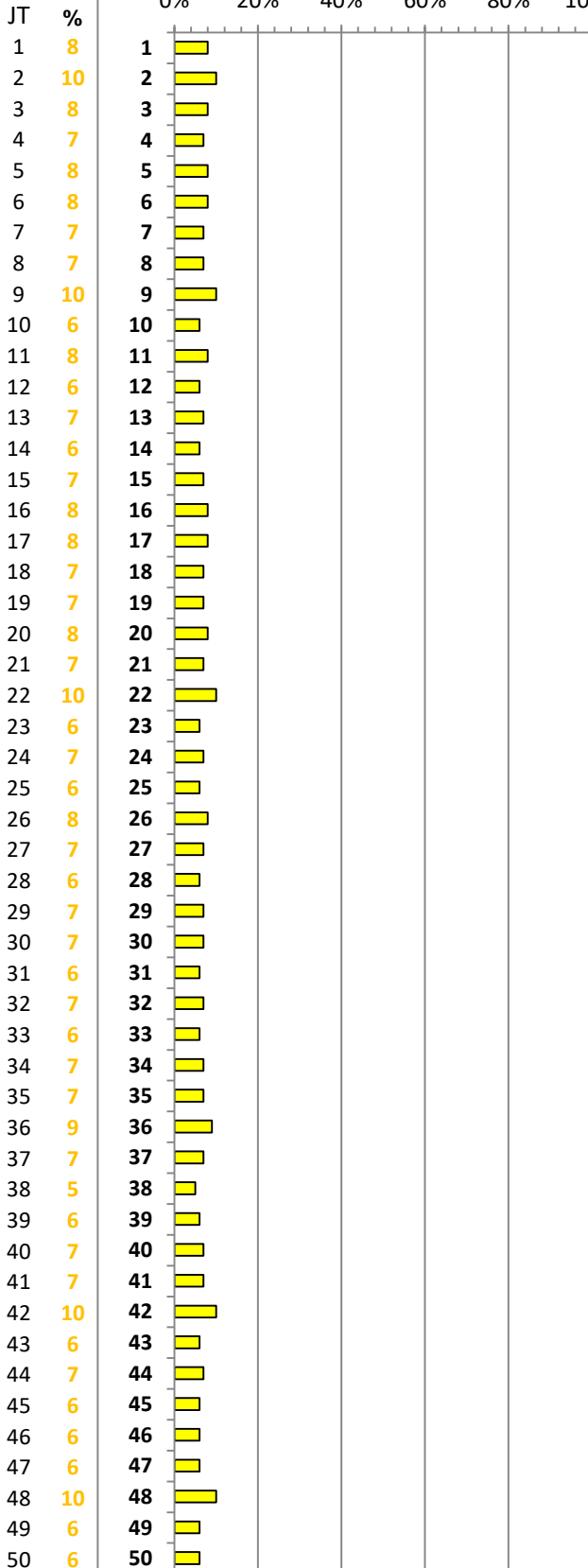
Weight 13.84 kg/m

Nominal Wall

0.254 in

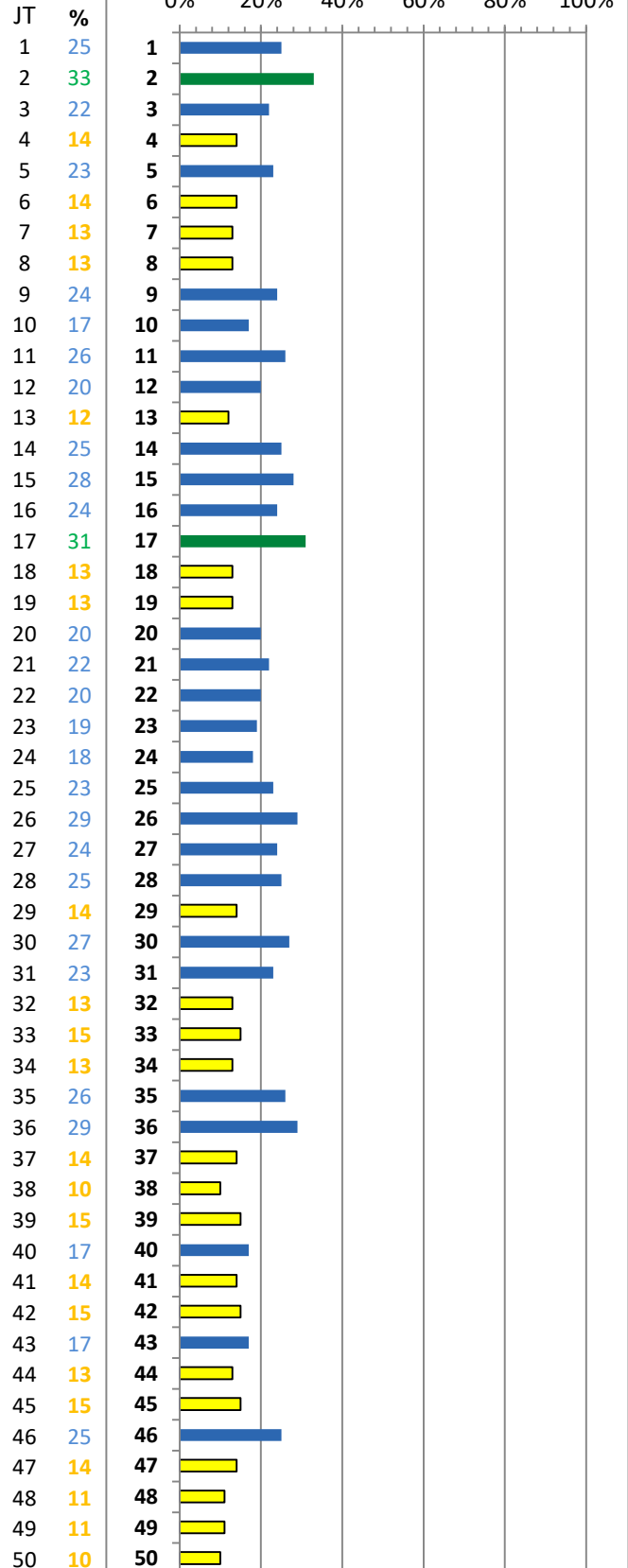
**CORROSION (PITTING)**

0-15 16-30 31-50 51-100  
0% 20% 40% 60% 80% 100%



**WALL LOSS (ROD WEAR)**

0-15 16-30 31-50 51-100  
0% 20% 40% 60% 80% 100%



# WELL PROFILE REPORT

**BLACKSPUR**  
WAYNE VANDERGAAG

Date: NOVEMBER 8 2023

WorkOrder **100134**

**Welltech IV**

Computerized Rig Floor Taking Inspection System

Well Location: **16-11-51-02 W5M**

Size 88.9 mm

Grade

J-55

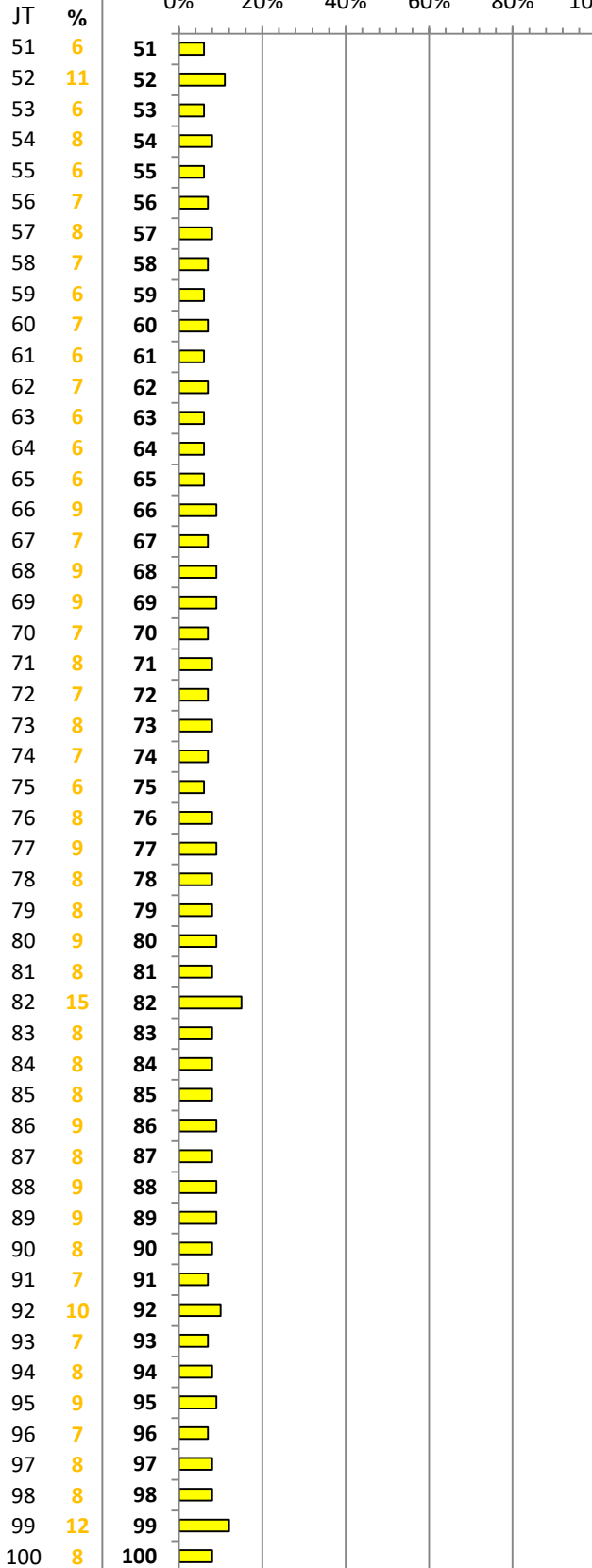
Weight 13.84 kg/m

Nominal Wall

0.254 in

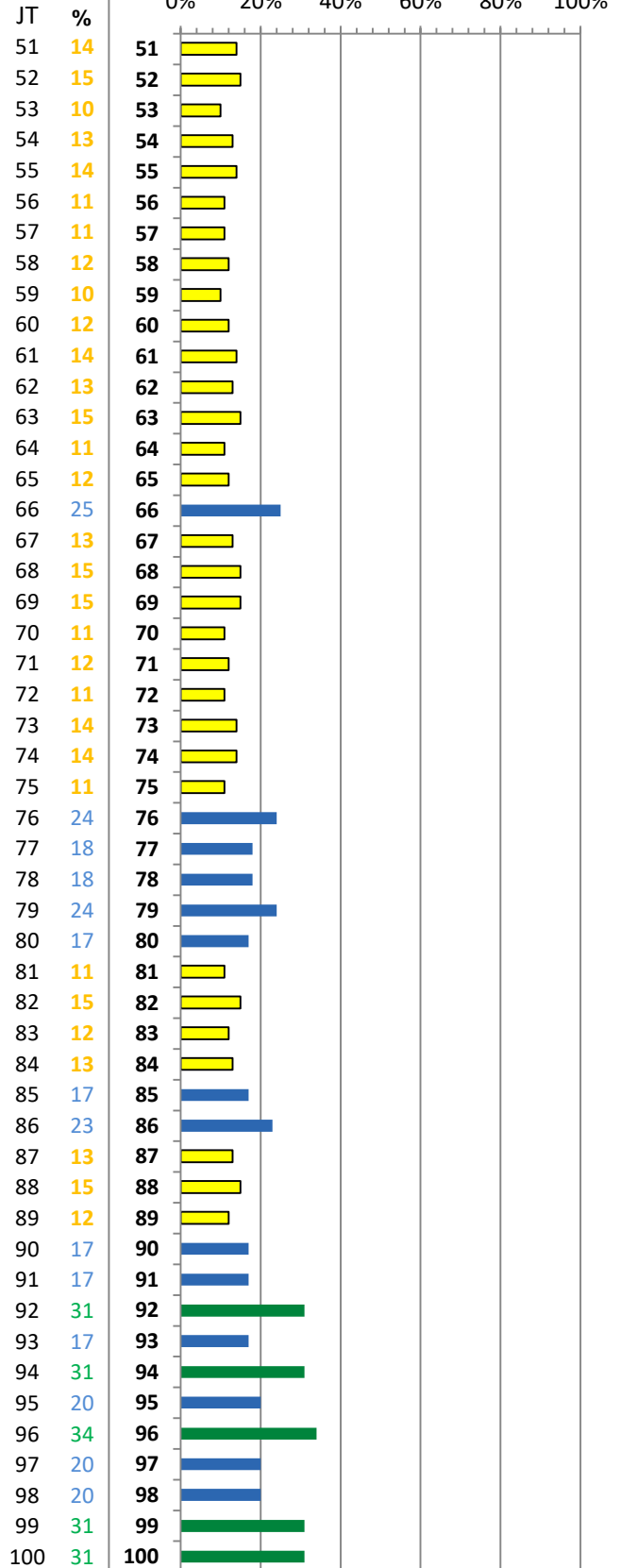
## CORROSION (PITTING)

0-15 16-30 31-50 51-100  
0% 20% 40% 60% 80% 100%



## WALL LOSS (ROD WEAR)

0-15 16-30 31-50 51-100  
0% 20% 40% 60% 80% 100%



Well Location: **16-11-51-02 W5M**

Size 88.9 mm

Grade

J-55

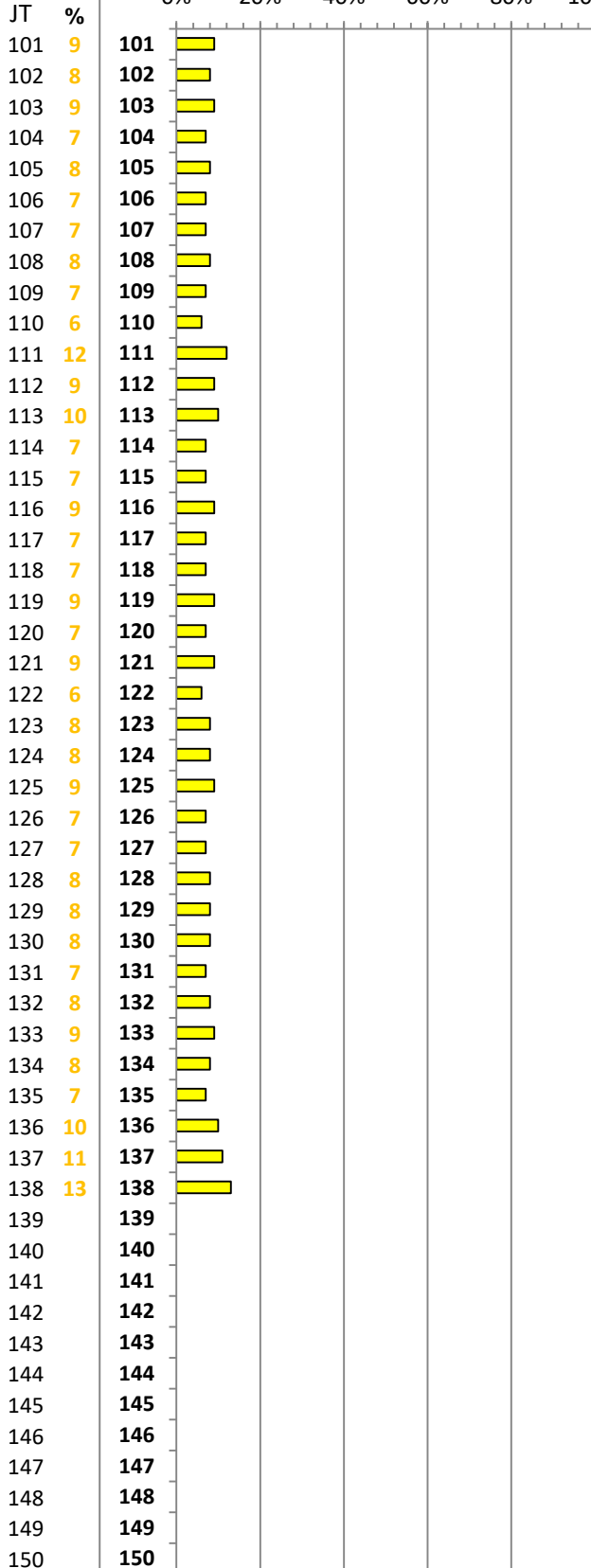
Weight 13.84 kg/m

Nominal Wall

0.254 in

## CORROSION (PITTING)

0-15 16-30 31-50 51-100  
0% 20% 40% 60% 80% 100%



## WALL LOSS (ROD WEAR)

0-15 16-30 31-50 51-100  
0% 20% 40% 60% 80% 100%

